

sudhaus ©



## SUDHAUS

Weblinger Straße 10  
 8054 Graz  
 T +43 316 2695700  
[www.sudhaus.at](http://www.sudhaus.at)

At the new Sudhaus, fine dining meets with the art of the brewery. Behind it is the traditional company Anton Paar, which has been enthusiastic – for technology, handicrafts and daily life – for several decades. The Sudhaus considers itself to be a cosy location for tasty food and great conversation in a pleasant atmosphere. The owners are proud of the homemade beer from their high-tech brewery, which is at the heart of the restaurant at the same time. The Sudhaus also has space for parties and events for up to 200 guests.

### ACCESSIBILITY

#### Public transport

Please use the route planner of the Styria Public Transport Network (Verbundlinie Steiermark):  
<https://verkehrsankunft.verbundlinie.at/>

#### Parking

- Asphalted parking in front of the house; level
- One designated disabled parking space

### ACCESS AND ENTRANCE

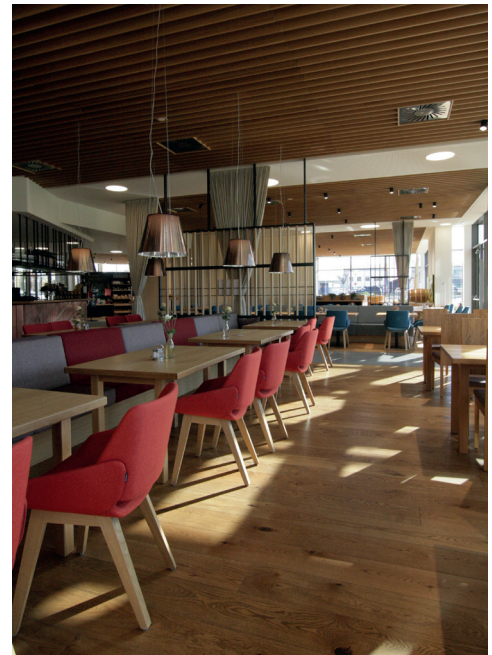
- Access level
- Dust control mat suitable for wheelchairs
- The accessible entrance is the main entrance
- Entrance: two automatic sliding doors one behind the other, sufficient space in front of and behind the doors
- Sliding doors made of glass  
**(not sufficiently marked)**
- Clear door width 160 cm



Entrance

**INTERIOR AREA:**

- Flooring suitable for wheelchairs (wood)
- Passage widths generous
- Bar/counter: Height 113 cm
- Also clothes hooks at a height of 60–70 cm
- Tables and chairs movable, benches aren't
- Most tables with 4 legs or centre leg
- Most tables offer under-table wheelchair access at 65 cm (lower edge), upper edge 75 cm



Interior area

**TOILET**

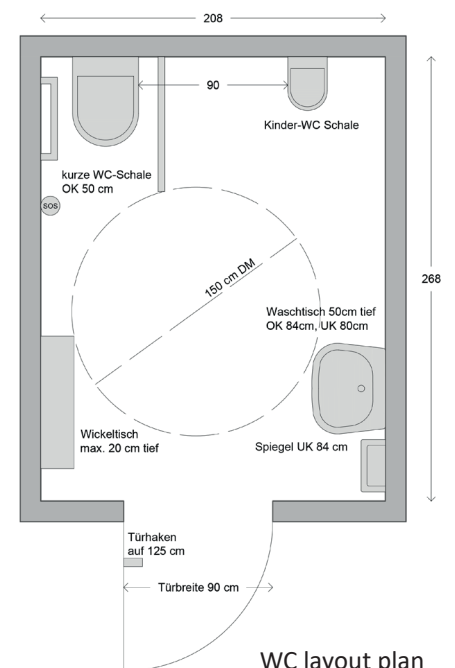
- In the basement, accessible by lift
- Accessible toilet separate (unisex), marked
- Including children's WC
- Hinged door with lever handle, easy to open
- Clear door width 90 cm
- WC accessible from the right, on this side 90 cm space
- Turning circle with diameter of 150 cm available
- **WC height: 50 cm**; small WC bowl
- Paper can be reached from the WC when sitting
- 1 folding support rail 77 cm high, 1 angled grab bar 77 cm high
- Soap and disinfectant available
- Washbasin 60 cm wide, 50 cm deep, lower edge 80 cm, upper edge 84 cm
- Lower edge of mirror 84 cm
- Emergency bell available
- Clothes hook (on the inside of the door) at a height of 125 cm
- Fold-up baby changing table



Accessible WC

**LIFT**

- Generous amount of space in lift
- Clear door width 140 cm
- Handrails available
- Controls at standard height (reachable, but not in Braille)
- **No audible announcement**
- Mirror available



WC layout plan

**TERRACE:**

- Access through automatic sliding door made of glass, clear door width 160 cm
- Sliding door **not sufficiently marked**
- Surface suitable for wheelchairs
- Tables and chairs movable
- Tables with 4 legs, under-table wheelchair access at 67 cm, upper edge 75 cm
- Tables with centre table leg offer under-table wheelchair access at 72 cm, upper edge 73 cm

**ADDITIONAL INFO**

- Non-smoking facility
- Children’s play area
- Large indoor play area
- Baby changing possible in accessible WC
- Children’s WC bowl in accessible WC
- For hygiene reasons (beer production), guide dogs are **not allowed**

Validity: October 2018, errors and omissions excepted



Terrace